

Annexure A

IN THE HIGH COURT OF NEW ZEALAND WELLINGTON REGISTRY

CIV-2015-485-767

IN THE MATTER OF an application under the Marine and Coastal Area (Takutai Moana) Act 2011 for orders recognising Customary Marine Title and Protected Customary Rights

AND

IN THE MATTER OF NGĀI TE HAPŪ, NGĀTI MAKEREWAI, NGĀTI TAKAHANGA, NGĀTI KAUAEWERA / TE URU, NGĀTI PAU and TE PATUWAI KI MOTITI (Ngā Hapū o Te Moutere o Motiti)

First applicants

KATARAINA PUTIPUTI KEEPA, UMUHURI MATEHAERE, GRAHAM HOETE and NEPIA RANAPIA, acting on behalf of Ngā Hapū o Te Moutere o Motiti

Second applicants

UMUHURI MATEHAERE, KATARAINA PUTIPUTI KEEPA and GRAHAM HOETE, acting as trustees of the MOTITI ROHE MOANA TRUST, on behalf of Ngā Hapū o Te Moutere o Motiti

Third applicants

CIV 2016-485-770

IN THE MATTER OF the Marine and Coastal Area (Takutai Moana) Act 2011

AND

IN THE MATTER OF applications by TE RŪNANGA O NGĀTI WHAKAUE KI MAKETŪ INCORPORATED for and on behalf of Ngāti Whakaue ki Maketū Hapū for orders recognising Protected Customary Rights and Customary Marine Title under the Act

CIV 2011-485-793

IN THE MATTER OF AN APPLICATION BY COLIN REEDER & OTHERS FOR PROTECTED CUSTOMARY RIGHTS UNDER THE MARINE AND COASTAL AREA (TAKUTAI MOANA) ACT 2011

Teleconference: 10 April 2017 at 9.30 am

Appearances: J Cole for the Attorney-General
R Makgill for Te Rūnanga O Ngāti Whakaue ki Maketū Inc
K Feint for Ngā Hapū o Te Moutere o Motiti, Motiti Rohe Moana

Annexure A

Trust, and Ngā Hapū o Te Moutere O Motiti
C Corry for CORANZ
N Swallow for Tauranga City Council
M Hill for Bay of Plenty Regional Council
A Neems for Ngāti Makino Heritage Trust and Ngāti Pīkiao Iwi Trust
K Jordan for Carrus Corporation Ltd, Ford Land Holdings Ltd, and Motiti Avocados Ltd
T Hovell for Ngā Potiki A Tampahore Trust and Colin Reeder
S Webster for Te Rūnanga o Ngāti Awa
J Koning for Te Whānau A Tauwhao Ki Ngā Moutere Trust
J Gardiner-Hopkins for Astrolabe Community Trustees Ltd
N Bruce-Smith for NZ Rock Lobster Industry Council

Date: 11 April 2017

MINUTE OF MALLON J

[1] After scheduling this teleconference the Court received 150 new applications under the Act. Due to the number received in a short time period, the Court registry is still processing them. The Court expects to have completed this process in about two weeks.

[2] It is possible that some of these new applications relate to areas that overlap with the areas that are the subject of the three proceedings named in the heading of this minute above. It is agreed by those present in this telephone conference that it is not sensible to progress the timetable for these three proceedings pending a review of the new applications.

[3] In accordance with the proposal in the Crown's memorandum dated 7 April 2017, the following directions are made:

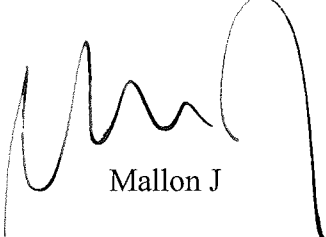
- a) The Court will provide the Crown with a list of all the applications (including details of the name of the applicants and the allocated CIV numbers).
- b) Within 20 working days of receipt of this list, the Crown will advise which, if any, of the applications from the Court's list have not been

Annexure A

served on the Crown. The Court will provide the Crown with a copy of any such application.

- c) Also within 20 working days of receipt of the list from the Court, the Crown will by memorandum provide a tentative list of groupings of applications for case management conferencing purposes, as well as potentially for hearing purposes, based on apparent overlapping application areas. The Crown's list will also identify which applications are also subject to an application for engagement with the Crown for a recognition order under the Act, also identifying whether the recognition order sought is for customary marine title or for protected customary rights.
- d) The Crown will send its memorandum by email to all applicants and registered interested parties who have provided email addresses for service;
- e) Applicants and current registered interested parties will then have 15 working days from receipt of the Crown memorandum to respond to the proposed groupings in the memorandum;
- f) The Court will then issue minutes as to the way forward for each of the applications.

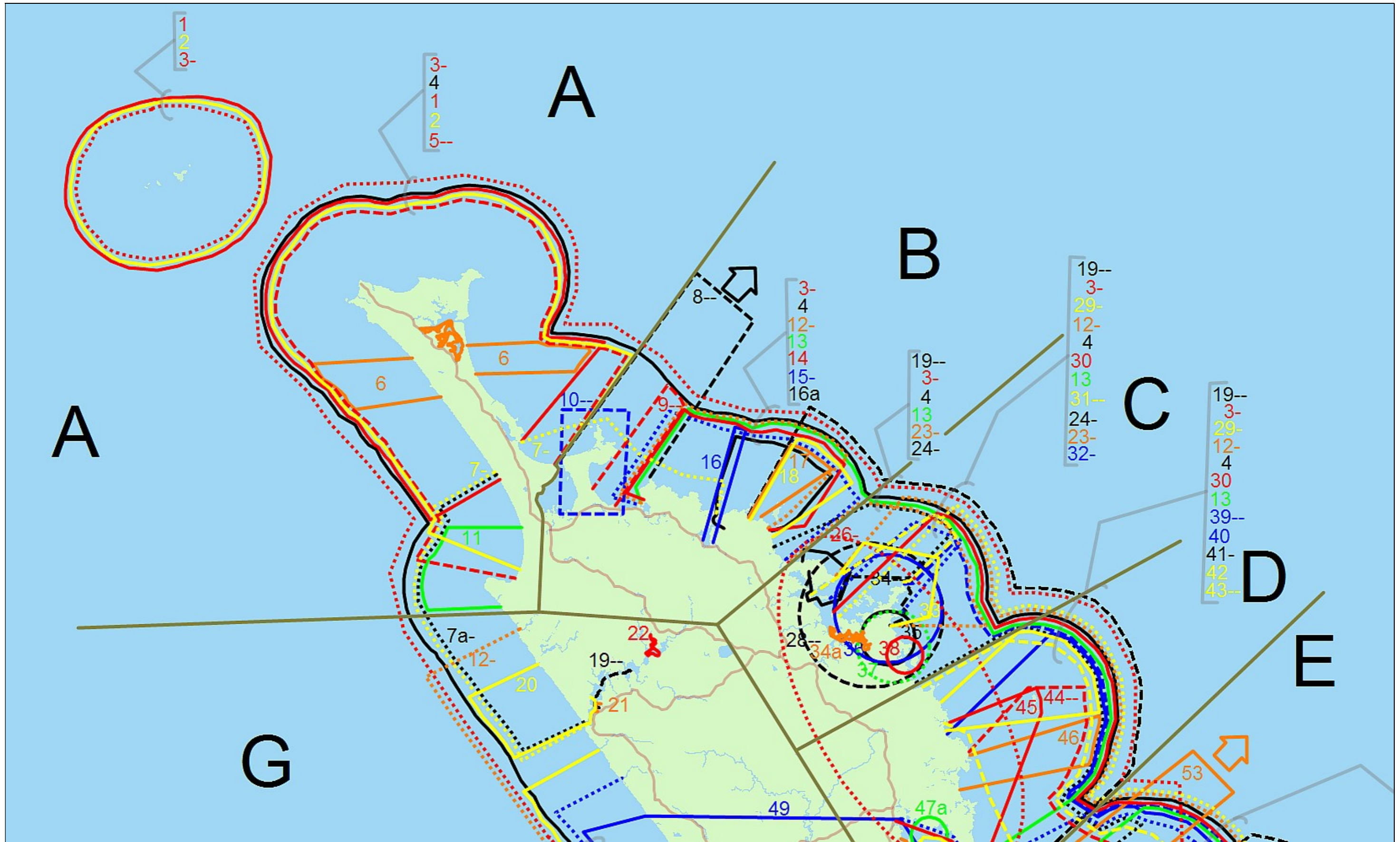
[4] In the meantime the existing timetable for the CIV-2015-485-767 proceeding is on hold. A new case management conference will be scheduled once the process outlined in [3] is completed for applications which overlap with the areas in the three proceedings named in the heading of this minute.

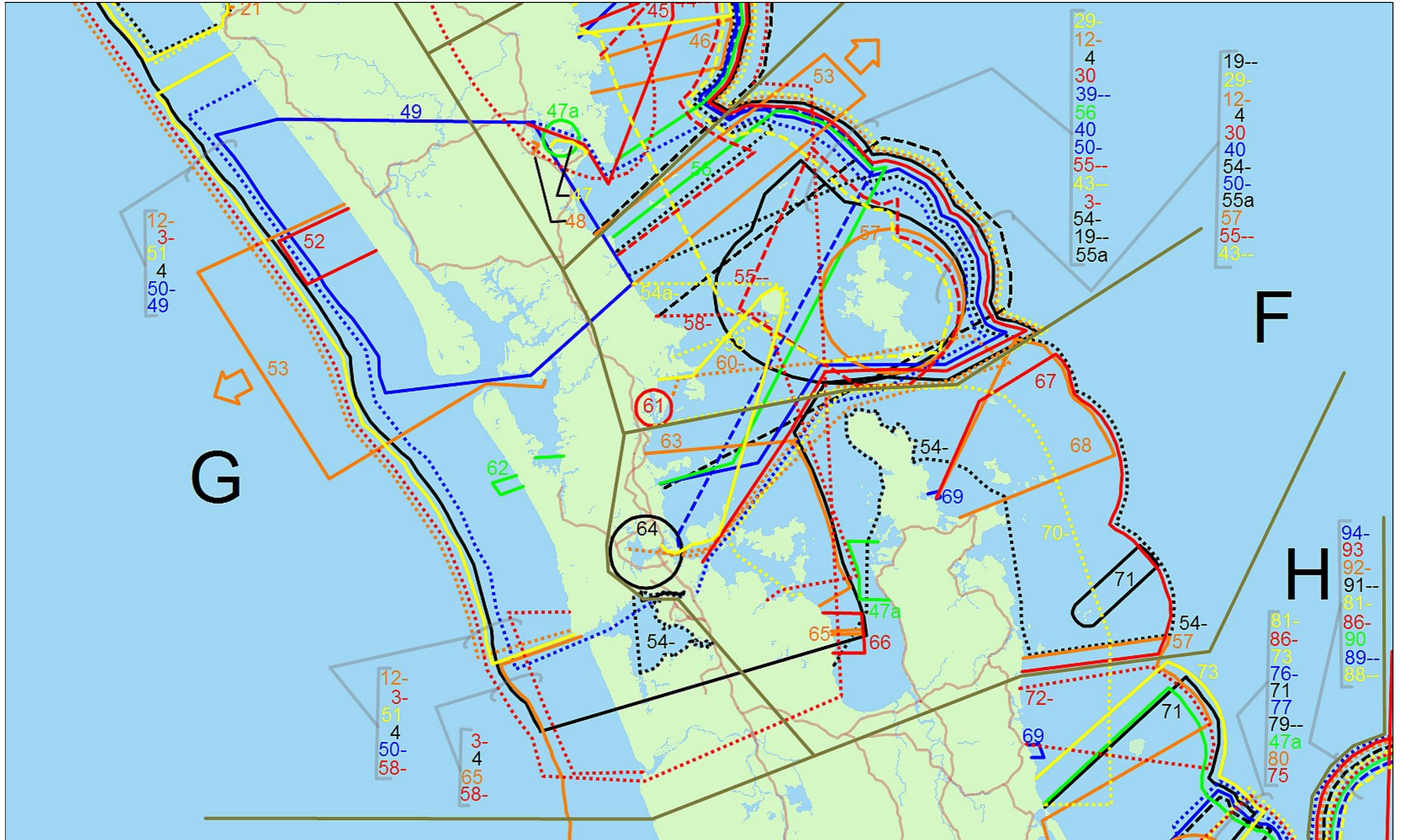


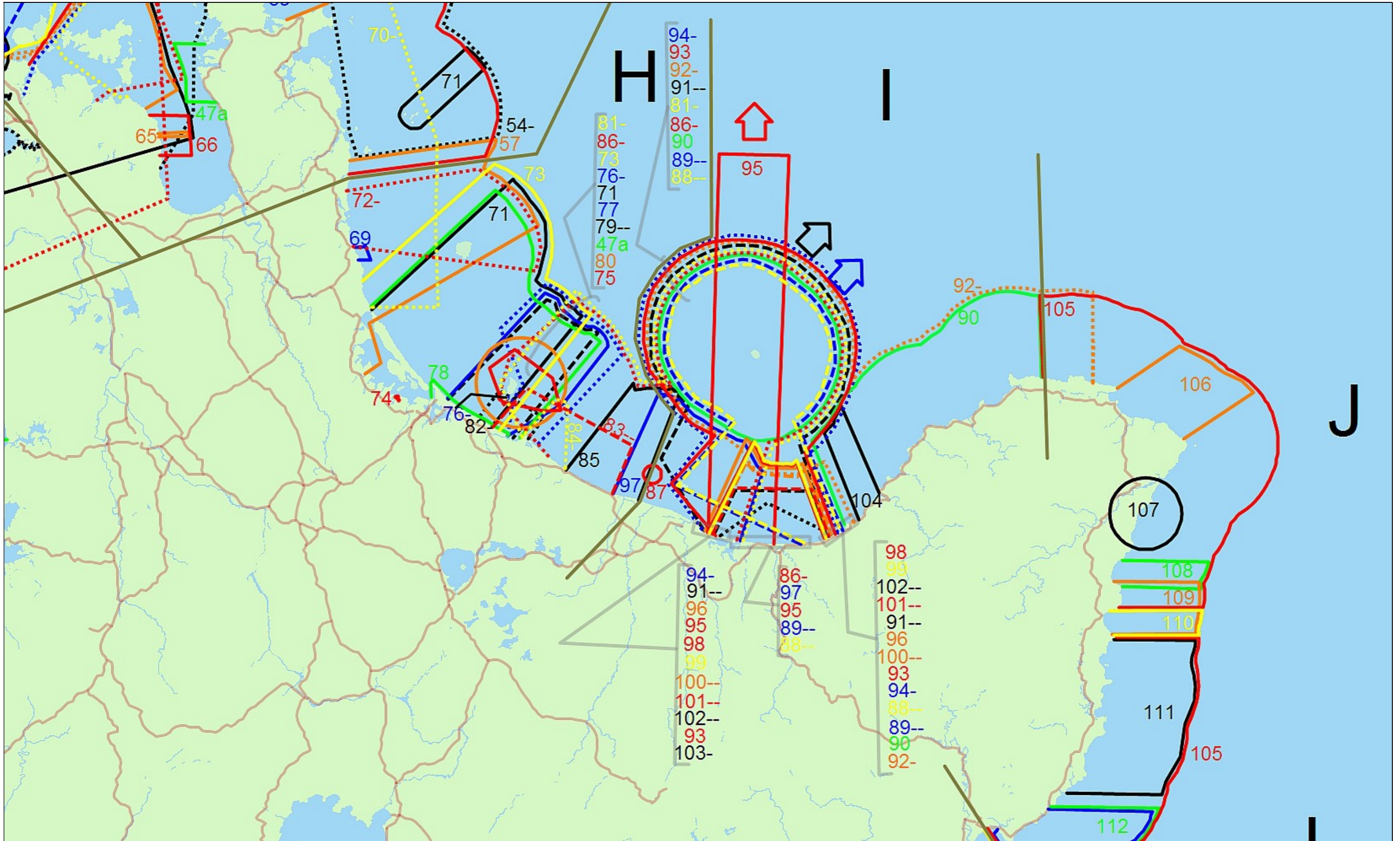
Mallon J

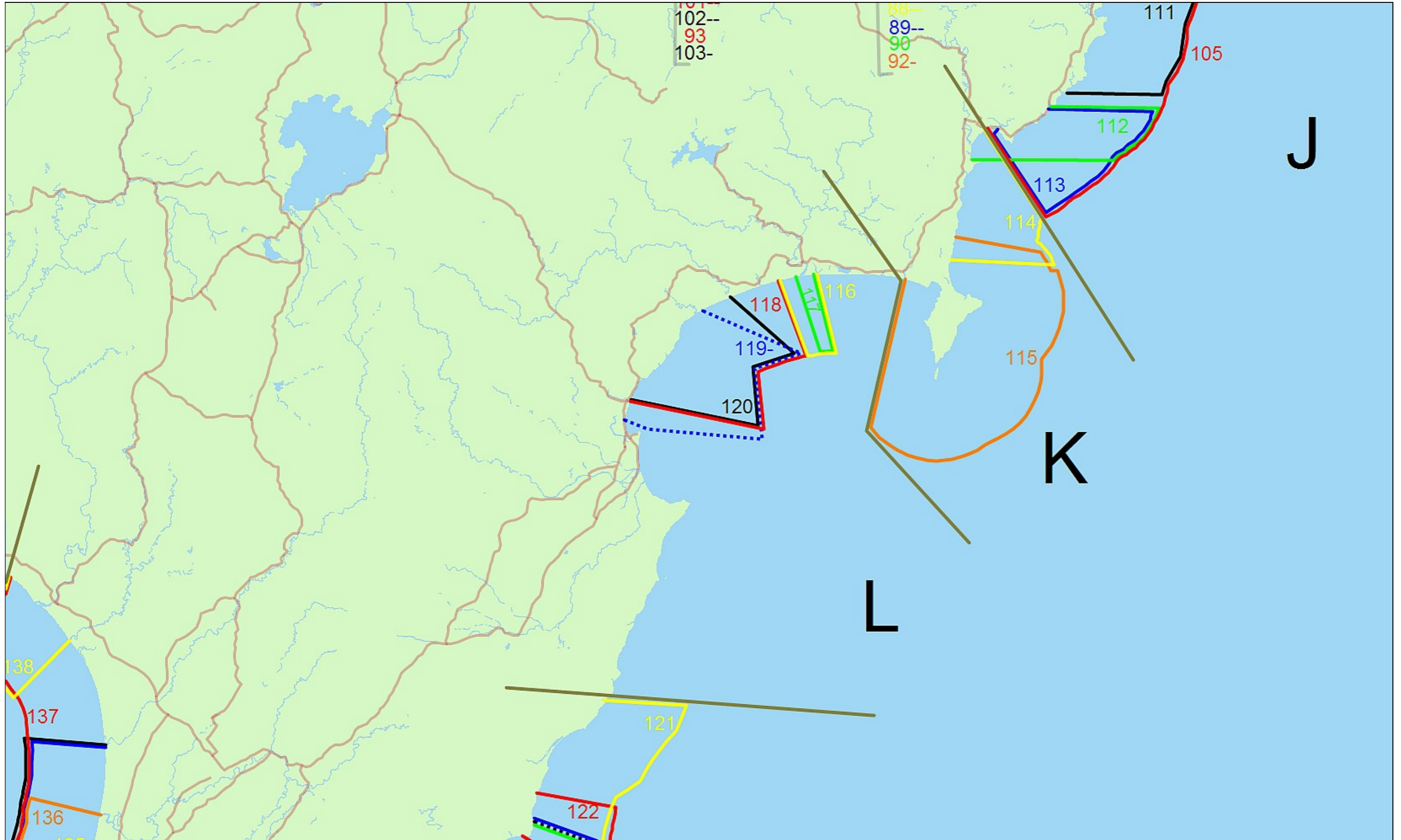
Annexure B

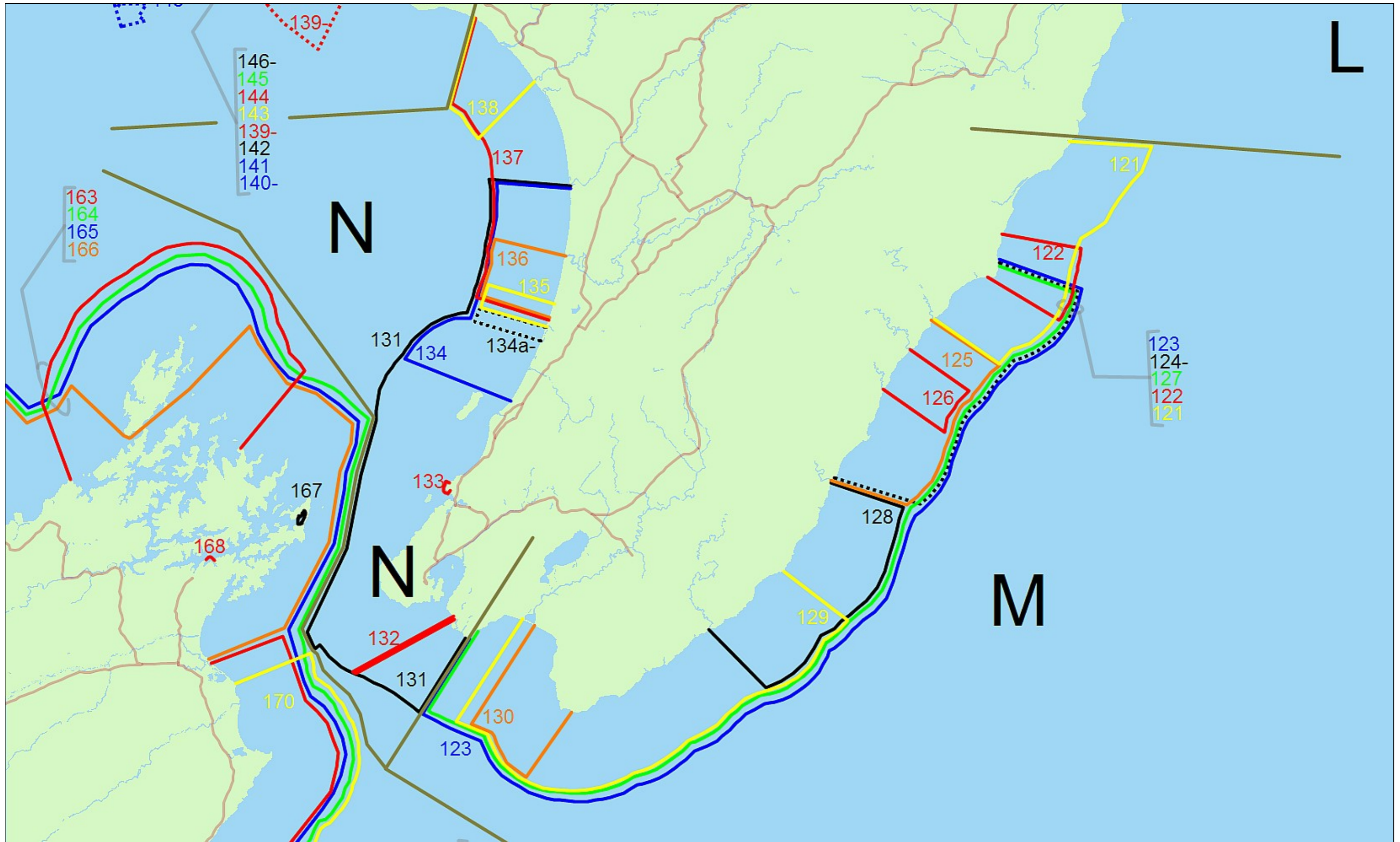
Maps of High Court Application Areas

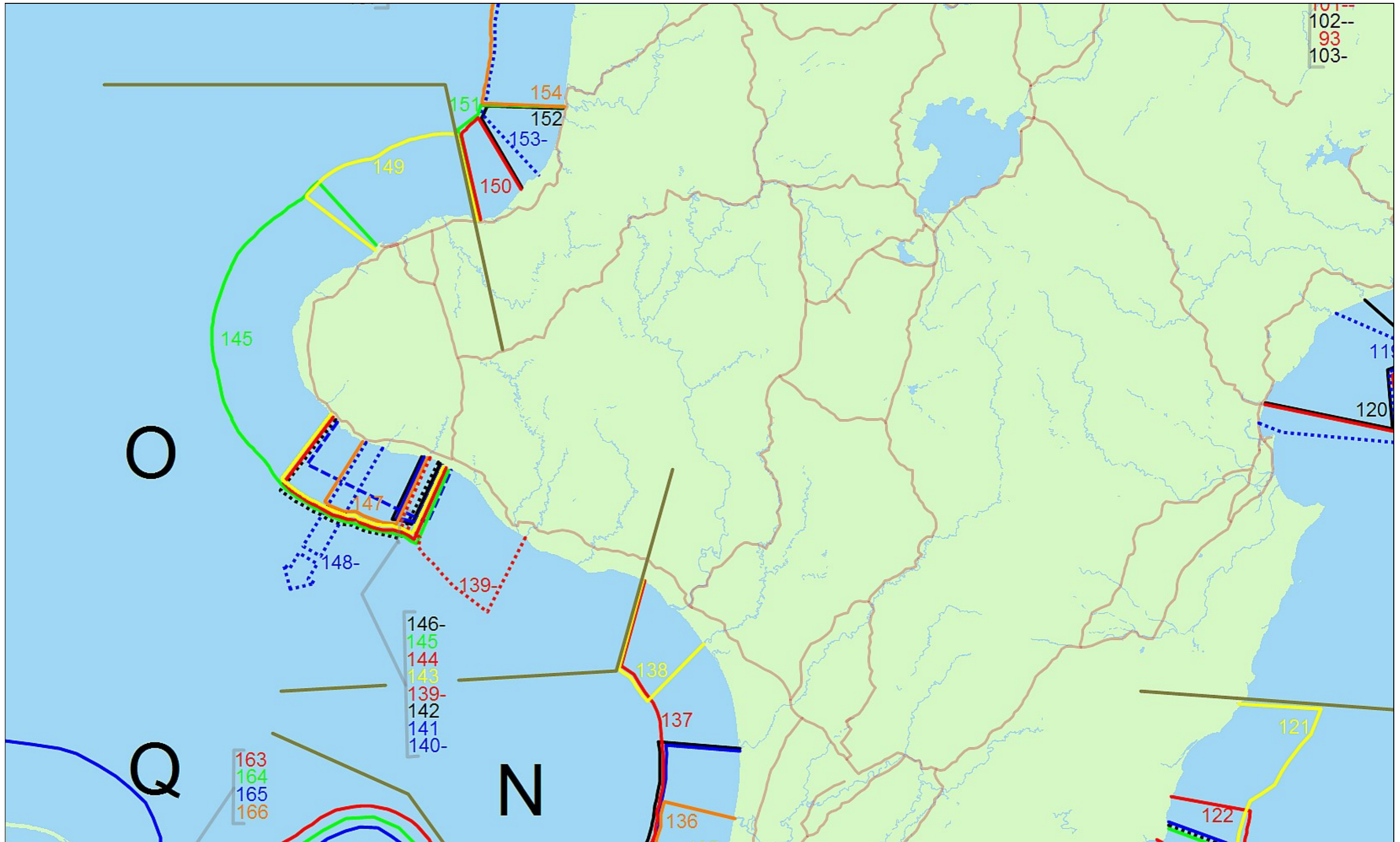


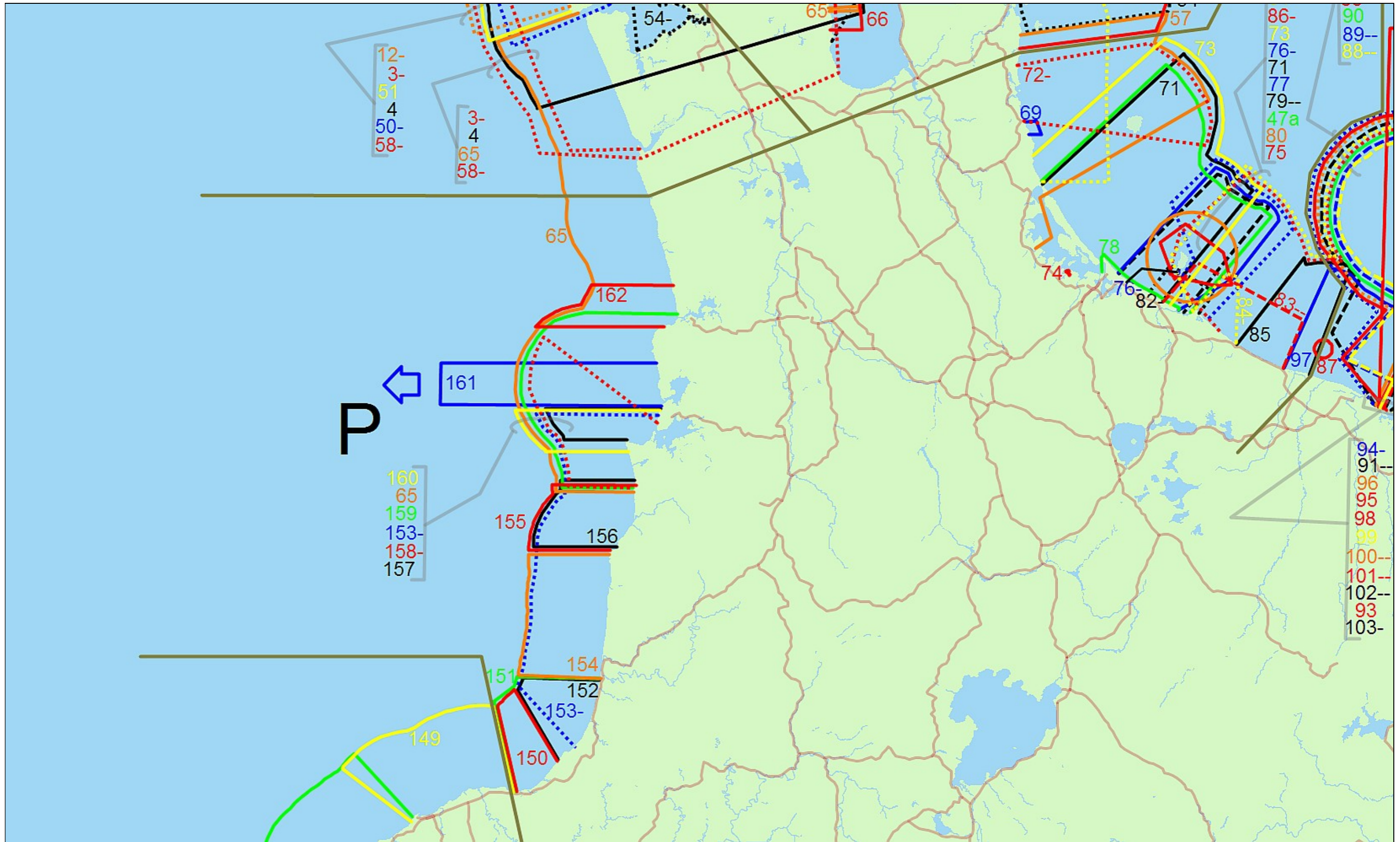


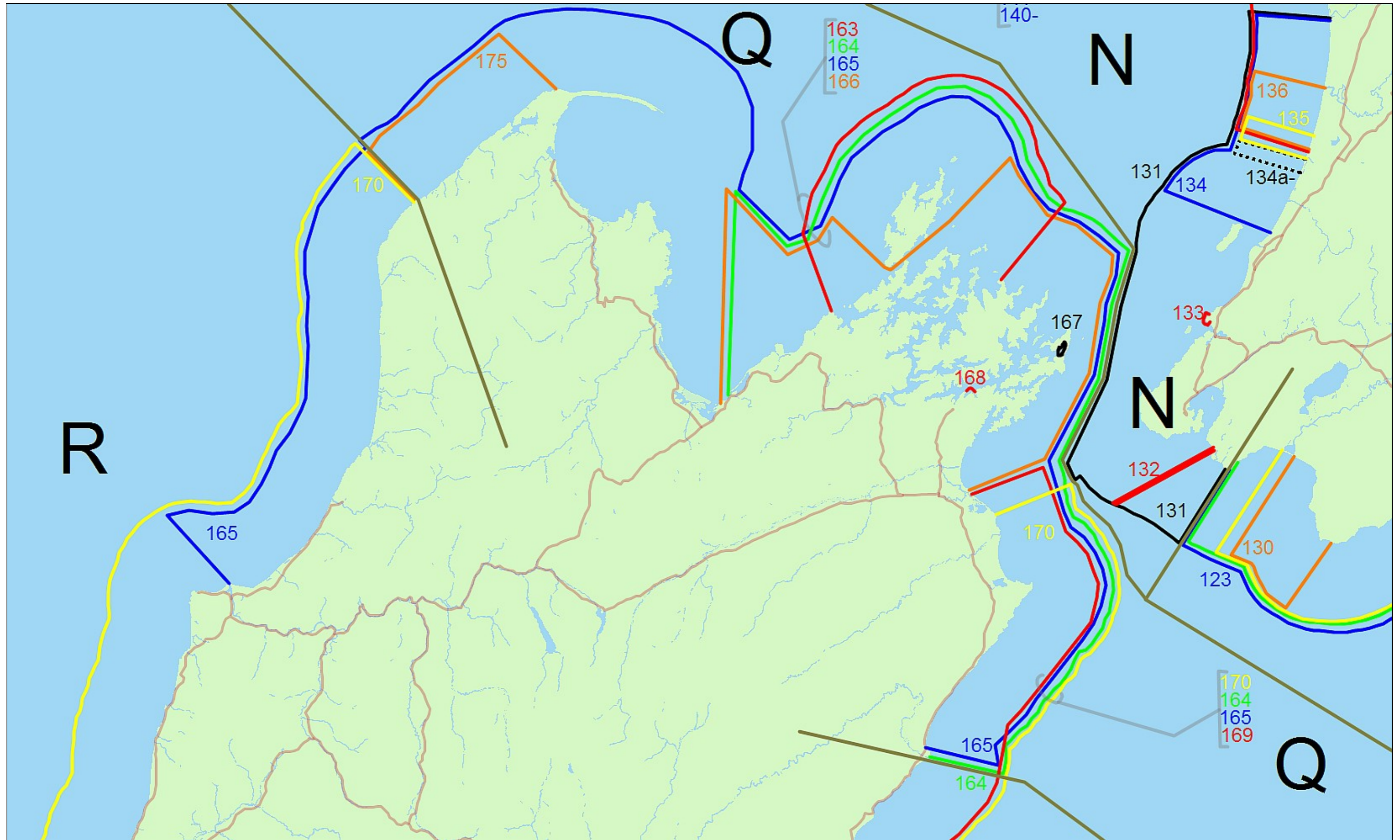






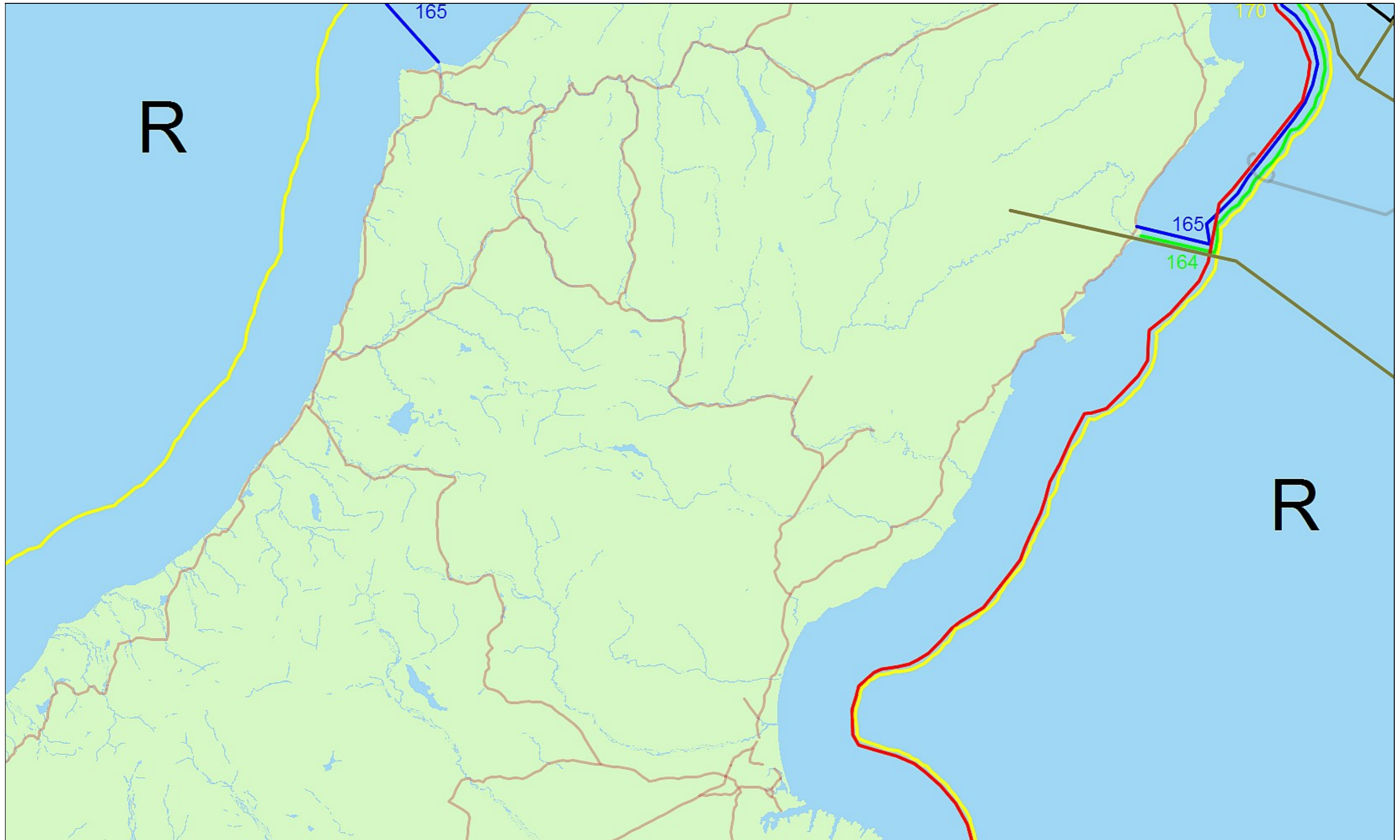




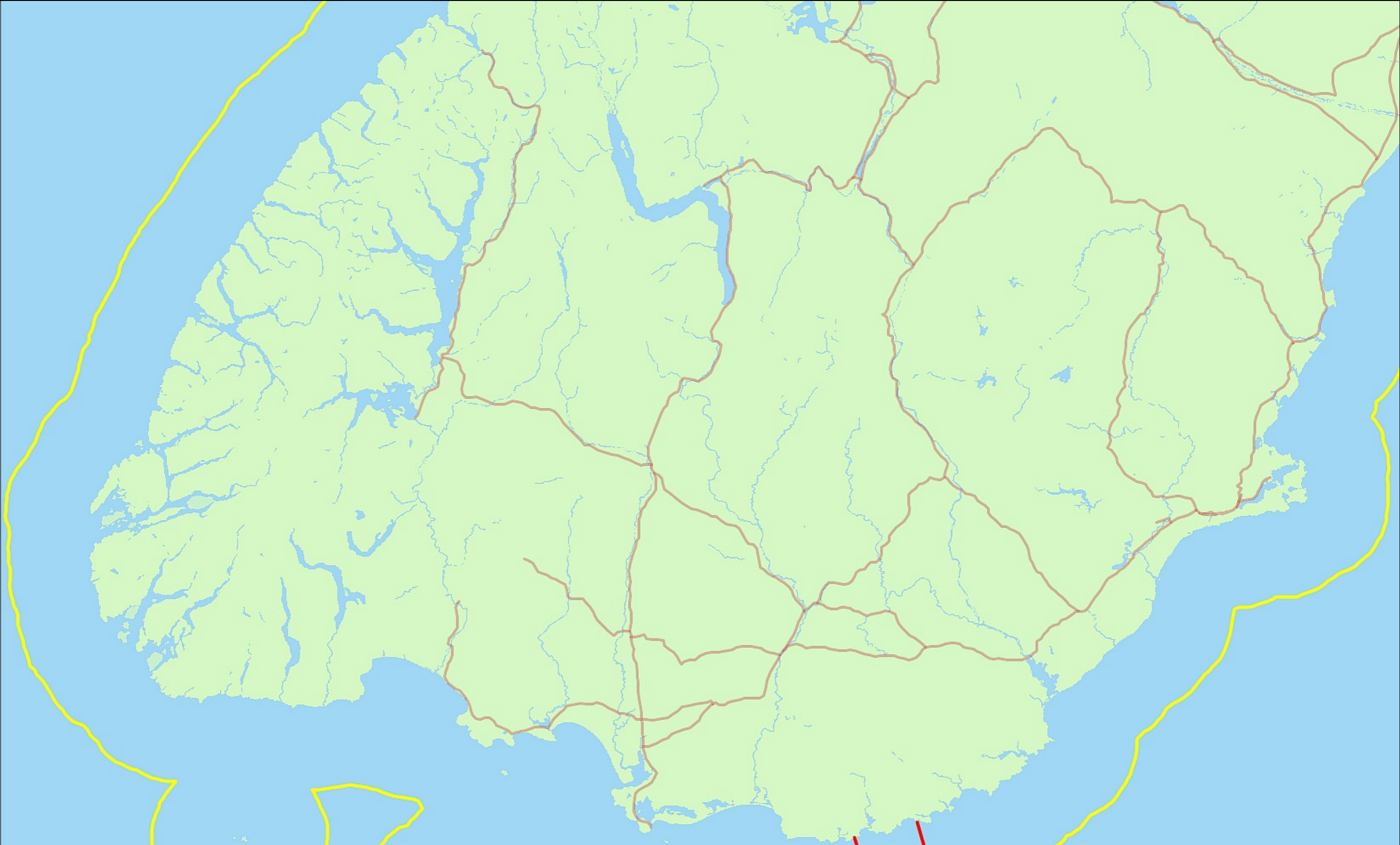


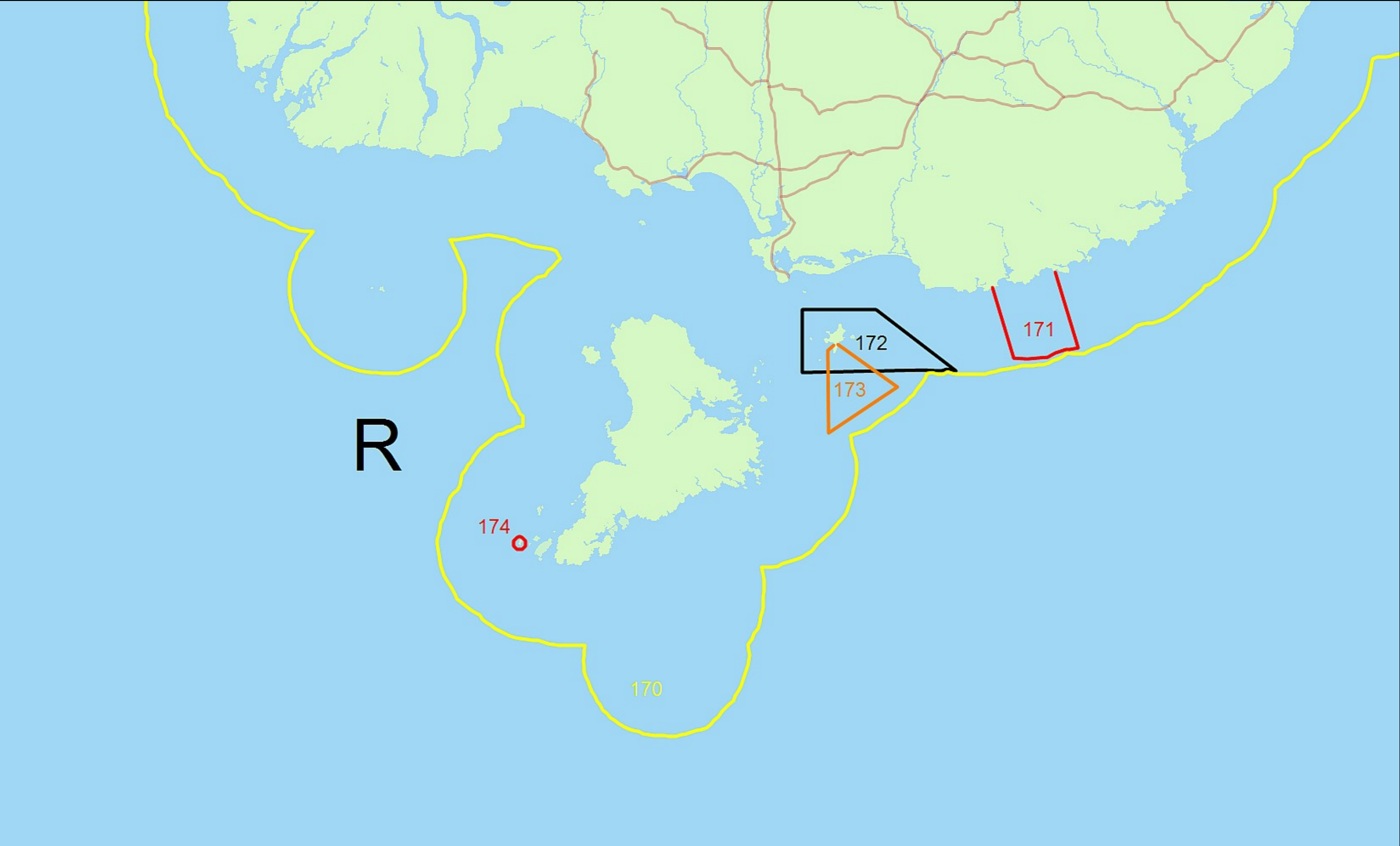
Map 9 – North Canterbury

Areas shown are approximate only, for discussion purposes, and are subject to revision









Annexure C part 1: Applications Mapped

	A	B	C	D	E	F	G	H	I	J	K	L	M	N	O	P	Q	R	S	T	U	V	W	X	Y	Z
117	109	CIV-2017-485-247	Roger Tichborne on behalf of Nga Hapu o Tokomaru Akau, for orders recognising Customary Marine Title and Protected Customary Rights	Orange	Waipiro Bay to Mawhai Point										Y											
118	110	CIV-2017-485-302	Tate Pewhairangi on behalf of Te Whanau a Ruataupare ki Tokomaru	Yellow	Tokomaru Bay										Y											
119	111	CIV-2017-485-255	Marise Lant, on behalf of Nga Hapu o Kokoronui ki te Toka a Taiau Takutai Kaitiaki Trust for orders recognising customary interests under the Marine and Coastal Area (Takutai Moana) Act 2011	Black	East Coast – Anaura to Whangara										Y											
120	112	CIV-2017-485-289	Trustees of the Rongowhakaata Iwi Trust Moera Brown, Geroe Ria, Lewis Moeau, Freddy Maynard, Lisa Taylor, Jody Wylie, LeRoy Pardoe, Staci Hare, Mere-Kingi Nepe and Roberta Howard on behalf of Rongowhakaata Iwi for Customary Marine Title, Wahi tapu Protection and Protected Customary Rights	Green	Turanga / Poverty Bay										Y	Y										
121	113	CIV-2017-404-571	Nick Manu Pouwhare Tupara of Turanga (Gisborne) for an order recognising Customary Marine Title and Protected Customary Rights	Blue	Pouawa River to Gisborne										Y											
122	114	CIV-2017-485-314	Trustees of the Tamanuhiri Tutu Poroporo Trust on behalf of Ngai Tamanuhiri Iwi an unincorporated common law trust, being the post settlement governance entity for Ngai Tamanuhiri Iwi	Yellow	Gisborne to Mahia											Y										
123	115	CIV-2011-485-794	Pauline Tangiora on behalf of Rongomaiwahine Iwi	Orange	North and south of Mahia											Y										
124	116	CIV-2017-485-230	Peter Riki Mihaere for an order recognising Customary Marine Title and Protected Customary Rights	Yellow	Wairoa												Y									
125	117	CIV-2017-485-288	Heta H Kaukau for the Te Rauhinu Marae Trustees	Green	Wairoa												Y									
126	118	CIV-2011-485-821	Trustees of the Ngati Pahuwera Development trust on behalf of Ngati Pahuwera	Red	Hawkes Bay												Y									
127	119	CIV-2017-485-241	Trustees of the Maungaharuru Tangitu Trust for and on behalf of Ngati Kurumokihī, Ngati Marangatuheua, Ngati Whakaari, Ngai Tauria, Ngai Te Ruruku ki Tangoio, and Ngai Tahu for orders recognising protected customary rights and customary marine title under Section 100(1) of the Marine and Coastal Area (Takutai Moana) Act 2011 Act	Blue Dash	Hawkes Bay												Y									
128	120	CIV-2017-485-235	Malcolm J. Kingi, on behalf of Ngai Tahu O Mohaka-Waikare, for orders recognising Customary Marine Title and Protected Customary Rights	Black	Mohaka River to Esk River												Y									
129	121	CIV-2017-485-193	Ngati Kere MACA Working Party for an order recognising Customary Marine Title and Protected Customary Rights for Ngati Kere hapu	Yellow	Southern Hawkes Bay													Y								
130	122	CIV-2011-485-789	Ketepunga Kaylene Clarkson and Eriha Whanau of Ngatikere/Ngati Kahungunu	Red	Southern Hawkes Bay													Y								
131	123	CIV-2017-485-224	Warwick Ian Gernhoefer, Yvette Rewa Grace, Jason Reuben Kerehi, Mavis Raylene Mullins and Edward Joseph Pearse as trustees of Rangitane Tu Mai Ra Trust, on behalf of Rangitane o Wairarapa and Rangitane o Tamaki nui-a-Rua, for orders recognising customary marine title and protected customary rights	Blue	Turakirae Head to southern Hawkes Bay													Y								
132	124	CIV-2017-404-481	Anita Broughton of Masterton for an order recognising Customary Marine Title and Protected Customary Rights	Black Dash	Wairarapa													Y								
133	125	CIV-2017-485-226	Rebecca Harper, on behalf of Te Hika o Papauma, for orders recognising Customary Marine Title and Protected Customary Rights	Orange	Akitio River to Whareama River													Y								
134	126	CIV-2017-485-220	Trustees of Papauma Marae on behalf of the original owners of Mataikona 1, 2 and 3 Blocks and their descendants	Red	Northern Wairarapa													Y								
135	127	CIV-2017-485-221	Trustees of the Ngati Kahungunu ki Wairarapa Tamaki nui-a-Rua Settlement Trust, on behalf of the applicant group Ngati Kahungunu ki Wairarapa Tamaki nui-a-Rua for Recognition Orders for Customary Marine Title, Wahi Tapu Protection and Protected Customary Rights	Green	Turakirae Head to southern Hawkes Bay													Y								
136	128	CIV-2017-485-232	Ngai Tumapuhia-A-Rangi Maori Marae Committee Incorporated, on behalf of Nga Uri o Ngai Tumapuhia A Rangi Hapu, for orders recognising Customary Marine Title and Protected Customary Rights	Black	North and central Wairarapa – Whareama River to Pahaoa River													Y								
137	129	CIV-2017-485-259	Ngati Hinewaka represented by Ngati Hinewaka me ona Karangaranga Trust seeking recognition orders under that Act	Yellow	Central to South Wairarapa													Y								
138	130	CIV-2017-485-267	Kahura James Watene, on behalf of Tukoko and Ngati Moe for an order recognising Customary Marine Title	Orange	Lake Ferry to Cape Palliser													Y								
139	131	CIV-2017-485-261	Muaupoko represented by the Muaupoko Tribal Authority incorporated for orders that recognise their customary marine title and protected customary rights under that Act	Black	Rangitikei River to Turakirae Head													Y								
140	132	CIV-2017-485-211	Trustees of Tupoki Takarangi Trust (1996) on behalf of the original owners of Parangarahu 2B1 and Parangarahu 2C and their descendants	Red	Near Pencarrow Head													Y								
141	133	CIV-2017-485-258	Tiratu Williams for an order recognising Customary Marine Title and Protected Customary Rights	Red	Plimmerton													Y								
142	134	CIV-2017-485-229	Rachael Ann Selby for an order recognising Customary Marine Title and Protected Customary Rights	Blue	Tangimoana to Peka Peka													Y								
143	134a	CIV-2017-485-273	Patrick Seymour on behalf of Te Whanau Tima (Seymour) and Te Hapu o Te Mateawa for recognition orders recognising Customary Marine Title and Protected Customary Rights	Black Dash	Ohau River to Waikawa River													Y								
144	135	CIV-2017-485-214	Margaret Morgan-Allen for an order recognising Protected Customary Rights	Yellow	Hokio to Ohau													Y								
145	136	CIV-2017-485-160	William James Taucki on behalf of Muaupoko iwi, for a recognition order recognising Customary Marine Title	Orange	Foxton to south of Hokio													Y								
146	137	CIV-2017-485-254	Te Patutokotoko represented by Christopher Henare Tahana, Edward (Fred) Clark, Hayden Turoa, and Novena McGuckin seeking recognition orders under that Act	Red	Kai Iwi to south of Hokio													Y								
147	138	CIV-2017-485-301	Gerrard Paul Albert and Te Kenchi Robert Mair for and on behalf of Te Awa Tupua and Nga Hapu me Nga Uri o Te Iwi o Whanganui for an order recognising Customary Marine Title and Protected Customary Rights	Yellow	Kai Iwi River to Whangaehu River													Y								
148	139	CIV-2017-485-282	Te Runanga o Ngati Ruanui Trust for orders recognising Customary Marine Title and Protected Customary Rights	Red Dash	South Taranaki														Y							
149	140	CIV-2017-485-300	Caroline Scott of Ngati Tamaahuroa and Titahi Hapu and Oeo Pa Trustees for orders recognising the customary marine title and protected customary rights of Ngati Tamaahuroa and Titahi Hapu	Blue Long Dash	South Taranaki														Y							
150	141	CIV-2011-485-803	Okahu Inuawai Hapu	Blue	South Taranaki														Y							
151	142	CIV-2011-485-814	Kanihi-Umutahi me etahi Hapu	Black	South Taranaki														Y							

Annexure C part 1: Applications Mapped

	A	B	C	D	E	F	G	H	I	J	K	L	M	N	O	P	Q	R	S	T	U	V	W	X	Y	Z
182	173	CIV-2017-485-295	Colin Wayne Topi for an order recognising Customary Marine Title and Protected Customary Rights	Orange	Ruapuke Island																		Y			
183	174	CIV-2011-485-806	Dennis Wiremu Tipene for an order recognising customary interests in the common marine and coastal area	Red	Rakiura																		Y			
184	175	CIV-2017-485-182	Henare Tahuaroa-Watson whanau seeking recognition orders under that Act	Orange	Cape Farewell to Kahurangi Point																	Y				

Annexure C part 2: Applications Not Mapped

	CIV-2017-485-248	Te Atiawa ki Whakarongotai Charitable Trust on behalf of Te Atiawa ki Whakarongotai			Only one of the boundary points could be located																						
--	------------------	---	--	--	---	--	--	--	--	--	--	--	--	--	--	--	--	--	--	--	--	--	--	--	--	--	--

Annexure D

High Court Applications in Each Proposed Group

Group	Application No.	Court Reference
A	1	CIV-2017-485-208
	2	CIV-2017-485-240
	3	CIV-2017-404-537
	4	CIV-2017-485-398
	5	CIV-2017-485-320
	6	CIV-2017-485-237
	7	CIV-2017-404-559
	7a	CIV-2017-485-290
	10	CIV-2017-485-271
	11	CIV-2017-485-245
	Not mapped	Cletus Maanu Paul
	Not mapped	CIV-2017-404-538
B	3	CIV-2017-404-537
	4	CIV-2017-485-398
	7	CIV-2017-404-559
	8	CIV-2017-485-268
	9	CIV-2017-404-578
	10	CIV-2017-485-271
	12	CIV-2017-404-558
	13	Tarewa Rota
	14	CIV-2017-404-539
	15	CIV-2017-404-565
	16	CIV-2017-404-529

Group	Application No.	Court Reference
	16a	CIV-2017-485-249
	17	CIV-2017-485-233
	18	CIV-2017-404-540
	19	CIV-2017-404-570
	24	CIV-2017-404-523
	Not mapped	Cletus Maanu Paul
	Not mapped	CIV-2017-404-538
C	3	CIV-2017-404-537
	4	CIV-2017-485-398
	12	CIV-2017-404-558
	13	Tarewa Rota
	19	CIV-2017-404-570
	23	CIV-2017-404-535
	24	CIV-2017-404-523
	25	CIV-2017-404-572
	26	CIV-2017-485-231
	28	CIV-2017-485-349
	29	CIV-2017-485-283
	30	Elvis Shayne Reti
	31	CIV-2017-404-577
	32	CIV-2017-485-265
	33	CIV-2017-485-277
	34	CIV-2017-485-321
	34a	CIV-2017-404-525
	35	CIV-2017-485-408

Group	Application No.	Court Reference
	36	CIV-2017-485-352
	37	CIV-2017-485-256
	38	CIV-2017-485-306
	39	CIV-2017-404-573
	Not mapped	Cletus Maanu Paul
	Not mapped	CIV-2017-404-538
D	3	CIV-2017-404-537
	4	CIV-2017-485-398
	12	CIV-2017-404-558
	13	Tarewa Rota
	19	CIV-2017-404-570
	26	CIV-2017-485-231
	29	CIV-2017-485-283
	30	Elvis Shayne Reti
	39	CIV-2017-404-573
	40	CIV-2017-404-546
	41	CIV-2017-404-554
	42	CIV-2017-485-228
	43	CIV-2017-404-555
	44	CIV-2017-404-579
	45	CIV-2017-404-566
	46	CIV-2017-485-279
	47	CIV-2017-485-286
	47a	CIV-2017-485-250
	48	CIV-2017-485-239

Group	Application No.	Court Reference
	49	CIV-2017-404-442
	50	CIV-2017-404-563
	Not mapped	Cletus Maanu Paul
	Not mapped	CIV-2017-404-538
E	3	CIV-2017-404-537
	4	CIV-2017-485-398
	12	CIV-2017-404-558
	19	CIV-2017-404-570
	29	CIV-2017-485-283
	30	Elvis Shayne Reti
	39	CIV-2017-404-573
	40	CIV-2017-404-546
	41	CIV-2017-404-554
	43	CIV-2017-404-555
	44	CIV-2017-404-579
	49	CIV-2017-404-442
	50	CIV-2017-404-563
	53	CIV-2009-488-205
	54	CIV-2017-404-564
	54a	CIV-2017-485-187
	55	CIV-2017-404-580
	55a	CIV-2017-404-574
	56	CIV-2017-404-545
	57	CIV-2017-485-222
	58	CIV-2017-404-569

Group	Application No.	Court Reference
	59	CIV-2017-485-276
	60	CIV-2017-404-524
	61	CIV-2017-485-378
	Not mapped	Cletus Maanu Paul
	Not mapped	CIV-2017-404-538
F	3	CIV-2017-404-537
	4	CIV-2017-485-398
	12	CIV-2017-404-558
	19	CIV-2017-404-570
	30	Elvis Shayne Reti
	39	CIV-2017-404-573
	40	CIV-2017-404-546
	47a	CIV-2017-485-250
	50	CIV-2017-404-563
	54	CIV-2017-404-564
	56	CIV-2017-404-545
	57	CIV-2017-485-222
	58	CIV-2017-404-569
	59	CIV-2017-485-276
	60	CIV-2017-404-524
	63	CIV-2017-404-518
	64	CIV-2017-404-520
	65	CIV-2017-419-84
	66	CIV-2017-404-582
	67	CIV-2017-404-480

Group	Application No.	Court Reference
	68	CIV-2017-404-482
	69	CIV-2017-404-556
	70	CIV-2017-404-528
	71	CIV-2017-485-244
	Not mapped	Cletus Maanu Paul
	Not mapped	CIV-2017-404-538
G	3	CIV-2017-404-537
	4	CIV-2017-485-398
	7	CIV-2017-404-559
	7a	CIV-2017-485-290
	12	CIV-2017-404-558
	19	CIV-2017-404-570
	20	CIV-2017-485-308
	21	CIV-2017-485-307
	22	CIV-2017-404-522
	49	CIV-2017-404-442
	50	CIV-2017-404-563
	51	CIV-2017-404-542
	52	CIV-2017-485-252
	53	CIV-2009-488-205
	54	CIV-2017-404-564
	58	CIV-2017-404-569
	62	CIV-2017-404-581
	65	CIV-2017-419-84
	Not mapped	Cletus Maanu Paul

Group	Application No.	Court Reference
	Not mapped	CIV-2017-404-538
H	47a	CIV-2017-485-250
	57	CIV-2017-485-222
	69	CIV-2017-404-556
	70	CIV-2017-404-528
	71	CIV-2017-485-244
	72	CIV-2017-404-483
	73	CIV-2017-485-294
	74	CIV-2017-485-195
	75	CIV-2017-485-257
	76	CIV-2016-485-770
	77	CIV-2011-485-793
	78	CIV-2017-485-219
	79	CIV-2017-485-315
	80	CIV-2015-485-767
	81	CIV-2017-404-562
	82	CIV-2017-404-568
	83	CIV-2017-485-291
	84	CIV-2017-485-223
	85	David Potter
	86	CIV-2017-485-196
	87	CIV-2017-485-317
	97	CIV-2017-485-185
	Not mapped	Cletus Maanu Paul
	Not mapped	CIV-2017-404-538

Group	Application No.	Court Reference
I	81	CIV-2017-404-562
	86	CIV-2017-485-196
	87	CIV-2017-485-317
	88	CIV-2017-485-272
	89	CIV-2017-485-270
	90	CIV-2017-485-318
	91	CIV-2017-485-262
	92	CIV-2017-485-278
	93	CIV-2017-485-355
	94	CIV-2017-485-377
	95	CIV-2017-485-201
	96	CIV-2011-485-817
	97	CIV-2017-485-185
	98	CIV-2017-485-253
	99	CIV-2017-485-299
	100	CIV-2017-485-375
	101	CIV-2017-485-264
	102	CIV-2017-485-269
	103	CIV-2017-485-292
	104	CIV-2017-485-238
	Not mapped	Cletus Maanu Paul
	Not mapped	CIV-2017-404-538
J	92	CIV-2017-485-278
	105	CIV-2017-485-284
	106	CIV-2017-485-225

Group	Application No.	Court Reference
	107	CIV-2017-485-263
	108	CIV-2017-485-242
	109	CIV-2017-485-247
	110	CIV-2017-485-302
	111	CIV-2017-485-255
	112	CIV-2017-485-289
	113	CIV-2017-404-571
	Not mapped	Cletus Maanu Paul
	Not mapped	CIV-2017-404-538
K	112	CIV-2017-485-289
	114	CIV-2017-485-314
	115	CIV-2011-485-794
	Not mapped	Cletus Maanu Paul
	Not mapped	CIV-2017-404-538
L	116	CIV-2017-485-230
	117	CIV-2017-485-288
	118	CIV-2011-485-821
	119	CIV-2017-485-241
	120	CIV-2017-485-235
	Not mapped	Cletus Maanu Paul
	Not mapped	CIV-2017-404-538
M	121	CIV-2017-485-193
	122	CIV-2011-485-789
	123	CIV-2017-485-224
	124	CIV-2017-404-481

Group	Application No.	Court Reference
	125	CIV-2017-485-226
	126	CIV-2017-485-220
	127	CIV-2017-485-221
	128	CIV-2017-485-232
	129	CIV-2017-485-259
	130	CIV-2017-485-267
	Not mapped	Cletus Maanu Paul
	Not mapped	CIV-2017-404-538
N	131	CIV-2017-485-261
	132	CIV-2017-485-211
	133	CIV-2017-485-258
	134	CIV-2017-485-229
	134a	CIV-2017-485-273
	135	CIV-2017-485-214
	136	CIV-2017-485-160
	137	CIV-2017-485-254
	138	CIV-2017-485-301
	Not mapped	Cletus Maanu Paul
	Not mapped	CIV-2017-404-538
O	139	CIV-2017-485-282
	140	CIV-2017-485-300
	141	CIV-2011-485-803
	142	CIV-2011-485-814
	143	CIV-2017-485-213
	144	CIV-2017-485-210

Group	Application No.	Court Reference
	145	CIV-2017-485-212
	146	CIV-2017-485-243
	147	CIV-2011-485-797
	148	CIV-2017-485-293
	149	CIV-2017-485-310
	Not mapped	Cletus Maanu Paul
	Not mapped	CIV-2017-404-538
P	150	CIV-2017-485-215
	151	CIV-2017-485-309
	152	CIV-2017-404-534
	153	CIV-2017-404-526
	154	CIV-2017-485-209
	155	CIV-2017-419-85
	156	CIV-2017-419-82
	157	CIV-2017-485-202
	158	CIV-2017-404-575
	159	CIV-2017-419-80
	160	CIV-2017-485-207
	161	CIV-2017-419-81
	162	CIV-2017-419-83
	Not mapped	Cletus Maanu Paul
	Not mapped	CIV-2017-404-538
Q	163	CIV-2017-485-218
	164	CIV-2017-485-183
	165	CIV-2017-485-365

Group	Application No.	Court Reference
	166	CIV-2017-485-167
	167	CIV-2017-485-172
	168	CIV-2017-485-171
	169	CIV-2017-485-266
	170	CIV-2017-485-280
	175	CIV-2017-485-182
	Not mapped	Cletus Maanu Paul
	Not mapped	CIV-2017-404-538
R	165	CIV-2017-485-365
	169	CIV-2017-485-266
	170	CIV-2017-485-280
	171	CIV-2011-485-811
	172	CIV-2017-485-296
	173	CIV-2017-485-295
	174	CIV-2011-485-806
	Not mapped	Cletus Maanu Paul
	Not mapped	CIV-2017-404-538
S - (All of NZ applications)	Not mapped	Cletus Maanu Paul
	Not mapped	CIV-2017-404-538
T – (Chatham Islands applications)	151	CIV-2017-485-309 (Chatham Islands part of application not mapped)
	Not mapped	CIV-2017-404-479
	Not mapped	CIV-2017-485-217
	Not mapped	CIV-2017-485-316
U – (Offshore Islands applications)	1	CIV-2017-485-208 (Offshore Islands part of application not mapped)

Group	Application No.	Court Reference
	2	CIV-2017-485-240 (Offshore Islands part of application not mapped)
	3	CIV-2017-404-537 (Offshore Islands part of application not mapped)
	68	CIV-2017-404-482 (Offshore Islands part of application not mapped)
	89	CIV-2017-485-270 (Offshore Islands part of application not mapped)
	91	CIV-2017-485-262 (Offshore Islands part of application not mapped)
	151	CIV-2017-485-309 (Offshore Islands part of application not mapped)

Annexure E

Total applications	Applicant Group	Date application received	Application type
1	Awhirangi Panehina Lawrence Whanau, Mita Pomana Whanau, Takutai Moana whanau Trust	2/04/2015	CMT&PCR
2	Craven Whanau	3/04/2017	CMT&PCR
3	Descendants of Wiremu Tuaru Williams and Emma Hikiora Williams	3/04/2017	CMT&PCR
4	Garry Walmsley	1/04/2017	CMT&PCR
5	George, Murray, Piripi, Puru, Rapata, Wehiwehi, Wharemate, Wellington and Armstrong Whanau	3/04/2017	CMT&PCR
6	Goulton whanau (Frances Goulton)	2/04/2017	CMT&PCR
7	Goulton whanau (Kahurangi Goulton)	3/04/2017	CMT&PCR
8	Goulton whanau (Lorraine Goulton)	3/04/2017	CMT&PCR
9	Goulton whanau (Waiora Goulton)	3/04/2017	CMT&PCR
10	Haare-Himiana-Heta Whānau	31/03/2017	CMT&PCR
11	Haiti-tai-marangai Marae Trust	3/04/2017	CMT&PCR
12	Hape whanau	3/04/2017	CMT&PCR
13	Hapu o Te Waiariki, Ngati Korora, Ngati Takapari	3/04/2017	CMT&PCR
14	Hapu Patutoka, Tahawau Whanau Pari, Te Hokokena Tawhiu	1/04/2017	CMT&PCR
15	Hazely Windelborn Whanau	3/04/2017	CMT&PCR
16	Heihei Whānau	9/02/2017	CMT&PCR
17	Henare Waata Whanau	3/04/2017	CMT&PCR
18	Hikuwai - Ihaia Whānau (Darling Todd)	30/03/2017	CMT&PCR
19	Hikuwai - Ihaia Whānau (Moana Tai Fredricsen)	31/03/2017	CMT&PCR
20	Hikuwai - Ihaia Whānau (Raiha Fredricsen)	31/03/2017	CMT&PCR
21	Hikuwai - Ihaia Whānau (Waiatua Fredricsen)	31/03/2017	CMT&PCR
22	Hone Whanau (Weka)	2/04/2017	CMT&PCR
23	Ihaia Paora Weka Tuwhera Gavala Murray Mahinepua Reserve Trust Ngatirua Iti NgatiMuri Nagatirumahue NgatiKawau Ngati Haiti Ngaitupango NgaPuhi NgatiKahu Te Auopouri	31/03/2017	CMT&PCR
24	Iris cecilia 'Timi' Paraone Whānau (Taumata B)	19/02/2013	CMT&PCR
25	Kahukuraariki Trust	6/03/2017	CMT&PCR
26	Kaitangata, Ngati Kauwau Takutai Moana Trust	1/04/2017	CMT&PCR
27	Kariatiana Whanau	3/04/2017	CMT&PCR
28	Kemp Whanau of Ngati Ruamahue	2/04/2017	CMT&PCR
29	Mackie-Maki Whanau	3/04/2017	CMT&PCR
30	Manukau Marae	24/03/2017	CMT&PCR
31	Matangirau, Kaitangata hapu	31/03/2017	CMT&PCR
32	Matihetiheti Marae	18/03/2017	CMT&PCR
33	Maungahoutoa Trust	3/04/2017	CMT&PCR
34	Merehora Taurua Whanau	3/04/2017	CMT&PCR
35	Mita Pomana and Takutai Moana Heke Pomana Whanau	1/04/2017	CMT&PCR
36	Mita Stewart and Nola Stewart	3/04/2017	CMT&PCR
37	Ngā Hapū o Ngāi Tahu	20/03/2017	CMT&PCR
38	Nga Hapu o Ngati Kahu	2/04/2017	CMT&PCR
39	Nga Hapu o Ngati Wai Iwi	1/04/2017	CMT&PCR
40	Nga Hapu o Tangaroa ki Te Ihu o Manaia tai atu ki Mangawhai	3/04/2017	CMT&PCR
41	Ngā Hapū o Te Rarawa	1/04/2011	CMT
42	Nga Hapu o Te Wahapu o Hokianga	2/04/2017	CMT&PCR
43	Nga Mokopuna o Amaia Raukura Goulton	3/04/2017	CMT&PCR
44	Nga Uri o Hairama Pita Kino Reweti	3/04/2017	CMT&PCR
45	Ngā Uri o Ngāti Kuri	17/10/2016	CMT
46	Ngā Whānau o Parengarenga Incorporation	16/03/2017	CMT&PCR
47	Ngā Whānau o Te Aupouri ki Te Kao	9/01/2017	CMT
48	Ngai Tupango	3/04/2017	CMT&PCR
49	Ngaitupangora (Hapu)	3/04/2017	CMT&PCR
50	Ngapuhi Nui Tonu (Awataha Marae)	3/04/2017	CMT&PCR
51	Ngapuhi Nui Tonu (Kenana Marae)	3/04/2017	CMT&PCR
52	Ngapuhi Nui Tonu (Matawhaorua Marae)	3/04/2017	CMT&PCR
53	Ngapuhi Nui Tonu (Maungarei Marae)	3/04/2017	CMT&PCR
54	Ngapuhi Nui Tonu (Taiao Marae)	3/04/2017	CMT&PCR
55	Ngapuhi Nui Tonu (Te Hapua Marae)	3/04/2017	CMT&PCR
56	Ngapuhi Nui Tonu (Te Kotahitanga Marae)	3/04/2017	CMT&PCR
57	Ngapuhi Nui Tonu (Te Tii Marae)	3/04/2017	CMT&PCR
58	Ngapuhi Nui Tonu (Waitangi Marae)	3/04/2017	CMT&PCR
59	Ngapuhi Nui Tonu-Kota-toka-tutaha-moana o whaingaroa	2/04/2017	CMT&PCR
60	Ngapuhi, Ngati Wai, Haki Pereki and Ngawhetu Sadler Whānau Trust	6/03/2017	CMT&PCR
61	Ngapuhi, Ngatikahu, Ngati Kawau, Ngati Kaitangata, Te Whanau Moana. Ngati Kahu ki Whangaroa, Ngapuhi ki Whangaroa, Ngati kokokohi, Ngati Haiti, Te rorohuri	1/04/2017	CMT&PCR
62	Ngati Hau Hapu	3/04/2017	CMT&PCR
63	Ngati Haua ki Te Rarawa	3/04/2017	CMT&PCR
64	Ngāti Hine	28/03/2017	CMT&PCR
65	Ngati Kaharau me Ngati Hau hapu ki Omanaia	3/04/2017	CMT&PCR
66	Ngati Kahu ki Whaingaroa, Matangirau	3/04/2017	CMT&PCR
67	Ngati Kahu ki Whangaroa and Ngapuhi ki Whangaroa	3/04/2017	CMT&PCR
68	Ngati kahu Ki Whangaroa, Kaitangata, Tua (McFarland)	2/04/2017	CMT&PCR
69	Ngati Kahu Whangaroa, Kaitangata, Tua (Waipouri)	2/04/2017	CMT&PCR
70	Ngati Kahu, Te Rarawa, Te Uriohina	2/04/2017	CMT&PCR
71	Ngati Kaihoro ki Maraetai Te Pakauri, Ngati Totoroora, Te Popoto, Ngati Kuri ki Te Rawhitiroa, Ngati Miru, Tahukai, Nga Uri o Te Kawau	3/04/2017	CMT&PCR
72	Ngati Kawau (Hema Smith)	3/04/2017	CMT&PCR
73	Ngati Kawau and Te Waiariki Korora	3/04/2017	CMT&PCR
74	Ngati Kawau Hapu, Te Uri Putete Ngati Kahuiti, Te Whanau a Pani	31/03/2017	CMT&PCR
75	Ngati Kawau, Ngati Kawhiti, Ngati Haiti and Ngaitupango hapu of Whangaroa	31/03/2017	CMT&PCR
76	Ngāti Kuta / Patukeha	22/12/2016	CMT

Annexure E

Total applications	Applicant Group	Date application received	Application type
77	Ngati Manawa, Kaitutae Waiariki	23/01/2017	CMT&PCR
78	Ngati Manu and its hapu, Te Uri Karaka and Te Uri o Raewera	30/03/2017	CMT&PCR
79	Ngati Manuhiri	3/04/2017	CMT&PCR
80	Ngati Maraeariki and Ngati Rongo	3/04/2017	CMT&PCR
81	Ngati Rahiri and Ngati Kawa	3/04/2017	CMT&PCR
82	Ngati Rehia Hapu	31/03/2017	CMT&PCR
83	Ngati Rehua Ngatiwai ki Aotea (Beazley)	3/04/2017	CMT&PCR
84	Ngati Rehua Ngatiwai ki Aotea (Trust)	3/04/2017	CMT&PCR
85	Ngati Rongo o Mahurangi	30/03/2017	CMT&PCR
86	Ngati Tara	3/04/2017	CMT&PCR
87	Ngāti Torehina ki Mataka	3/04/2017	CMT&PCR
88	Ngati Torehina ki Mataure O Hau (McGrath)	1/04/2017	CMT&PCR
89	Ngati Toro Hapu	3/04/2017	CMT&PCR
90	Ngati Wai	3/04/2017	CMT&PCR
91	Ngāti Whanaunga	3/04/2017	CMT&PCR
92	Ngāti Wharara Hapū	18/03/2017	CMT&PCR
93	Ngati Whatua o Kaipara	31/03/2017	CMT&PCR
94	Ngātīrua Hapū	16/03/2017	CMT&PCR
95	Ngātīruamahue	3/04/2017	not specified
96	Ngatiwai, Te Uri o Hiki Hiki hapu, Piripi and Matenga whanau	3/04/2017	CMT&PCR
97	O Nga Hapu o Taimai ki te Marangai	2/04/2017	CMT&PCR
98	Otakanini Tōpū Māori Inc.	3/12/2016	CMT&PCR
99	Pakiri G Trust	28/08/2015	PCR
100	Pananawe Marae	31/03/2017	CMT&PCR
101	Patuharakeke	3/04/2017	CMT&PCR
102	Patuharakeke Te Iwi	3/04/2017	CMT&PCR
103	Pene Hemi Kiwīkiwi Whanau Trust	3/04/2017	CMT&PCR
104	Puke and Stewart Whanau of Matauri, Wainui and Matangirau	2/04/2017	CMT&PCR
105	Reti whanau	3/04/2017	CMT&PCR
106	Rewha and Reweti Whānau	31/03/2017	CMT&PCR
107	Ririwha Ahu Whenua Trust	3/04/2017	CMT&PCR
108	Rupapera Whanau	3/04/2017	CMT&PCR
109	Smith Whānau	3/04/2017	CMT&PCR
110	Tahawai	30/03/2017	CMT&PCR
111	Takapari Waata	3/04/2017	CMT&PCR
112	Taumata A Whanau	3/04/2017	CMT&PCR
113	Taumata B Block Whānau	21/03/2016	CMT&PCR
114	Taumata B Block Whānau - Hauturu (Little Barrier) Owners	29/03/2017	CMT&PCR
115	Taumata B Block Whānau - Mahuki Island (Gannett Island) Owners	29/03/2017	CMT&PCR
116	Taumata B Block Whānau - Motairehe 2B1 and 4B1 Owners	29/03/2017	CMT&PCR
117	Taumata B Block Whānau - Omaha 1 and Omaha 2 Owners	29/03/2017	CMT&PCR
118	Taumata B Block Whānau - Pakiri G - Block 30811 Owners	29/03/2017	CMT&PCR
119	Taumata B Block Whānau - Pakiri T Owners	29/03/2017	CMT&PCR
120	Taumata B Block Whānau - Pakiri U Owners	29/03/2017	CMT&PCR
121	Taumata B Block Whānau - Rangiahua Island Owners	29/03/2017	CMT&PCR
122	Te Aupouri	29/03/2017	CMT&PCR
123	Te Awa o Mangakahia	31/03/2017	CMT&PCR
124	Te Hikutu	2/04/2017	CMT&PCR
125	Te Hikutu whanau and hapu	3/04/2017	CMT&PCR
126	Te Ihutai ki Ōrirā	31/03/2017	CMT&PCR
127	Te Iwi O Ngai Takoto	3/04/2017	CMT&PCR
128	Te iwi o Te Rarawa (Hami Piripi)	3/04/2017	CMT&PCR
129	Te Iwi o Te Roroa	1/11/2016	CMT&PCR
130	Te Iwi o Te Roroa (Nesbit)	2/04/2017	CMT&PCR
131	Te Iwi, whanau and hapu of Ngatiwai	31/03/2017	CMT&PCR
132	Te Kapotai	22/03/2017	CMT&PCR
133	Te Kaunihēra Maori o Te Tai Tokerau	27/03/2017	CMT&PCR
134	Te Kemara I Whanau, Ngati Kawa and Ngati Rahiri	3/04/2017	CMT&PCR
135	Te Kupenga O Ngati Hako	3/04/2017	CMT&PCR
136	Te Parawhau Hapu	2/04/2017	CMT&PCR
137	Te Parawhau ki Tai	3/04/2017	CMT&PCR
138	Te Popoto ki Otūrei	3/04/2017	CMT&PCR
139	Te Rae Trust	31/03/2017	CMT&PCR
140	Te Rūnanga o Ngāti Whātua	21/03/2016	CMT&PCR
141	Te Tane Hohaia Whānau Waikaraka	31/03/2017	CMT&PCR
142	Te Tao Maui me Te Hokokeha	2/04/2017	CMT&PCR
143	Te Uri o Hau	30/08/2013	CMT&PCR
144	Te Uri o Hikihiki hapu	3/04/2017	CMT&PCR
145	Te uri o Mohi Tawhai Trust	3/04/2017	CMT&PCR
146	Te Uri o Tautohe	3/04/2017	CMT&PCR
147	Te Uri o Te Aho, Te Uri o te Aho ki Orira, Ngati Kiore, Te Ihutai, Ngati Toro,Ngati Patutoka, Ngati Te Reinga, Te Uri Kaiwhare, Te Mahurehure, Ngati Pakau, Ngati te Rauwawe, Mahuri Marae whanau, Hokianga o nga hapu whanau taiwhenua	3/04/2017	CMT&PCR
148	Te Uri Taniwha	1/04/2017	CMT&PCR
149	Te Whanau a Rangiwakaahu	3/04/2017	CMT&PCR
150	Te whanau hapu Ngati Kauwau ki Matangirau ki Whangaroa	26/02/2017	CMT&PCR

Annexure E

Total applications	Applicant Group	Date application received	Application type
151	Te Whānau Hau O Te Whiu Hapū	3/03/2017	CMT&PCR
152	Te Whanau Moana me Te Rorohuri	31/03/2017	CMT&PCR
153	Te Whanau o Hone Papita raua ko Rewa Ataria Paama	1/04/2017	CMT&PCR
154	Te Whanau o Rataroa	3/04/2017	CMT&PCR
155	Te Whanau Whero	3/04/2017	CMT&PCR
156	The Descendants of Puhi Poata and Waikainga Hone Tua Pomana	3/04/2017	CMT&PCR
157	The extended whanau of Charlotte McGee nee Piripi	2/04/2017	CMT&PCR
158	Thomas Tua Whanau	2/04/2017	CMT&PCR
159	Uri o Ururoa	3/04/2017	CMT&PCR
160	Waiparera Marae	3/04/2017	CMT&PCR
161	Whakaki	3/04/2017	CMT&PCR
162	Whakarara Maori Committee	3/04/2017	CMT&PCR
163	Whānau Moran	3/04/2017	CMT&PCR
164	Whangaroa Ngaiotonga Trust	3/04/2017	CMT&PCR
165	Wharemaru Whanau (Ngai Takoto)	31/03/2017	CMT&PCR
166	Freda Pene Reweti Whanau Trust	3/04/2017	CMT&PCR
167	Ngaati Tamaoho	3/04/2017	CMT
168	Ngai Tai ki Tamaki Trust	3/04/2017	CMT&PCR
169	Ngati Taimanawaiti	3/04/2017	CMT&PCR
170	Ngati Te Ata	3/04/2017	CMT&PCR
171	Ngati Whatua Orakei	31/03/2017	CMT&PCR
172	Te Kawera a Maki	3/04/2017	CMT&PCR
173	Hauraki Maori Trust Board	3/04/2017	CMT&PCR
174	Ngāti Hei	27/03/2017	CMT&PCR
175	Ngāti Huarere ki Whangapoua	27/03/2017	CMT&PCR
176	Ngāti Māhanga	3/04/2017	CMT&PCR
177	Ngati Maru	3/04/2017	CMT&PCR
178	Ngāti Porou ki Hauraki	1/04/2011	CMT&PCR
179	Ngāti Pu	27/03/2017	CMT&PCR
180	Ngāti Raukauri	3/04/2017	CMT&PCR
181	Ngāti Tamaoho	42824	CMT&PCR
182	Ngati Tamatera	3/04/2017	CMT&PCR
183	Ngāti Tara Tokanui	3/04/2017	CMT&PCR
184	Ngatiwai ki Aotea	2/04/2017	CMT&PCR
185	Te Whānau Ā Haunui (Royal family)	16/02/2017	CMT&PCR
186	Kāwhia Tangata, Aotea Whenua, Whaingaroa Moana	13/03/2017	CMT
187	Maniapoto Iwi (John Kaati)	27/03/2017	CMT&PCR
188	Nga hapu o Mokau ki Runga	3/04/2017	CMT
189	Nga Hapu o Te Tokaanganui-a-noho Regional Management Committee and Ngati Kinohaku Trust	30/03/2017	CMT
190	Nga Tini Hapu o Maniapoto	3/04/2017	CMT&PCR
191	Ngati Apakura	3/04/2017	CMT&PCR
192	Ngāti Hikairo	2/07/2015	CMT&PCR
193	Ngati Peehi, Ngati Te Kanawa, Ngati Kinohaku ki Marokopa, Ngati Rarua Ki Marokopa, Toa Tupahau	3/04/2017	CMT
194	Ngati Te Wehi	3/04/2017	CMT&PCR
195	Ngati Uakau Hapu	3/04/2017	CMT&PCR
196	Ngati Whakamarurangi/Tainui ie Ngati Koata, Ngati Motemote, Ngati Tahinga (Thomson)	1/04/2017	CMT
197	Tainui Hapu o Tanui Waka	3/04/2017	CMT
198	Te Rūnanga o Ngāti Mahuta ki te Hauāuru	3/04/2017	CMT&PCR

Annexure E

Total applications	Applicant Group	Date application received	Application type
199	Te Runanganui o Ngati Hikairo	3/04/2017	CMT&PCR
200	Te Whakakitenga o Waikato	3/04/2017	CMT&PCR
201	McClutchie Morrell whānau	9/07/2013	PCR
202	Nga hapu o kokoronui ki te toka taiau takutai kaitiaki trust		CMT&PCR
203	Ngā Hapū o Ngāti Porou	1/04/2011	CMT
204	Nga Hapu o Tokomaru Akau	3/04/2017	CMT&PCR
205	Ngai Tamanuhiri	3/04/2017	CMT&PCR
206	Ngati Oneone	1/04/2017	CMT
207	Ngati Oneone (Tupara-Katene)	3/04/2017	CMT&PCR
208	Rongowhakaata	2/11/2016	CMT&PCR
209	Searancke whānau	12/07/2013	CMT&PCR
210	Te Whanau a Kai	3/04/2017	CMT&PCR
211	Te Whanau a Ruataupare	3/04/2017	CMT&PCR
212	Whanau a Kahu	1/04/2017	CMT
213	Araukuuku Hapu	3/04/2017	CMT&PCR
214	Nga Hapu o Poutama	3/04/2017	CMT&PCR
215	Nga Poutama nui a Awa, Aohehu, Ngati Taanewai	3/04/2017	CMT&PCR
216	Nga Wairiki Ngati Apa	3/04/2017	CMT&PCR
217	Ngaa Rauru	3/02/2017	CMT&PCR
218	Ngati Haua Hapu and Ngaruahinerangi Iwi	3/04/2017	CMT&PCR
219	Ngāti Mutunga	31/03/2017	CMT&PCR
220	Ngati Tama	1/04/2017	CMT&PCR
221	Ngati Tamaahuroa and Titahi hapu	2/04/2017	CMT&PCR
222	Ngati Tu	3/04/2017	CMT&PCR
223	Puketapu Whanau / Hapu O Te Mana Whenua	29/03/2017	CMT&PCR
224	Rakautaua 1C Māori Reservation	31/03/2017	CMT&PCR
225	Taranaki Iwi	31/03/2017	CMT&PCR
226	Te Atiawa (Taranaki) Iwi	3/04/2017	CMT&PCR
227	Te Atiawa Iwi Authority	9/02/2012	CMT&PCR
228	Te Awa Tupua and Nga Hapu me Nga Uri o Te Iwi o Whanganui	3/04/2017	CMT&PCR
229	Te Korowai o Ngāruahine iwi Inc. (previously Ngā Hapū o Ngāruahine Inc)	23/03/2012	CMT&PCR
230	Te Patutokotoko	3/04/2017	CMT&PCR
231	Te Rūnanga o Ngāti Ruanui Trust	15/09/2016	CMT&PCR
232	Hapū of Utauta Parata and Hona Webber	15/03/2017	CMT
233	Muaupoko (Co-operative Society)	3/04/2017	CMT&PCR
234	Muaupoko (Tribal Authority)	3/04/2017	CMT&PCR
235	Nga Hapu o Himatangi	1/04/2017	CMT&PCR
236	Ngāti Hikitanga te Paea Morgan Whānau	17/08/2016	PCR
237	Ngāti Huia and Matau	8/03/2017	CMT&PCR
238	Ngāti Huia ki Kikopiri	8/03/2017	CMT
239	Ngāti Kauwhata	31/03/2017	CMT&PCR
240	Ngati Takihiku, Ngati Hinemata, Ngati Ngarongo	3/04/2017	CMT&PCR
241	Owners of Parangarahu 2B1 and 2C Blocks	3/04/2017	CMT&PCR
242	Pomare & Rangihaeta Whanau	7/03/2017	CMT&PCR
243	Rangitaane North Island	28/03/2017	CMT&PCR
244	Rangitaane o Manawatu	31/03/2017	CMT&PCR
245	Te Atiawa ki Te Upoko o Te Ika a Maui Trust	3/04/2017	CMT&PCR
246	Te Atiawa ki Whakarongotai	3/04/2017	CMT&PCR
247	Te Iwi o Ngāti Tukorehe me onā hapū, whānau hoki	3/04/2017	CMT&PCR
248	Te Kotahitanga o Te Iwi o Ngāti Wehi Wehi	17/03/2017	CMT&PCR
249	Whanau Tima/Seymour Hapu Te Mateawa, Ngati Tukorehe, Ngati Te Rangi Iwi Ngati Raukawa	31/03/2017	CMT&PCR
250	Heretaunga Tamatea	2/04/2017	CMT&PCR
251	Kahukura Whānau Trust	10/03/2017	CMT&PCR
252	Mana Ahuriri	7/08/2014	CMT&PCR
253	Maungaharuru-Tangitu Hapū	14/02/2014	PCR

Annexure E

Total applications	Applicant Group	Date application received	Application type
254	Ngā Hapū o Iwitea Marae	14/02/2017	CMT&PCR
255	Ngā hapū o Kairakau me Pourerere	31/03/2017	CMT&PCR
256	Ngā hapū o Te Whakakī - specifically Ngāti Hine, Ngāti Hinepua and Ngāi Te Ipu	2/04/2017	CMT&PCR
257	Nga Tumapuhia-a-Rangi Maori Marae Committee Incorporated	3/04/2017	CMT&PCR
258	Ngai Tumapuhia a rangi ki Motuwairaka Incorporated and Ngai Tumapuhia a Rangi ki Okautete Incorporated	3/04/2017	CMT&PCR
259	Ngati Hinewaka me ona Karangaranga	3/04/2017	CMT&PCR
260	Ngāti Kaahu and others	6/03/2017	CMT&PCR
261	Ngati Kahungunu ki Wairarapa Tamaki nui a rua	3/04/2017	CMT&PCR
262	Ngati Kere	31/03/2017	CMT&PCR
263	Ngāti Pāhauwera	1/04/2011	CMT&PCR
264	Ngāti Pāhauwera (2)	3/02/2015	CMT&PCR
265	Ngāti Pārau Hapū	28/03/2017	CMT&PCR
266	Ngāti Rahui - Ngāi te Apatu	6/03/2017	CMT&PCR
267	Rangitāne o Wairarapa me Tāmaki nui-a-Rua	31/03/2017	CMT&PCR
268	Rongomaipapa Marae	2/04/2017	CMT&PCR
269	Rongomaiwahine	20/07/2015	CMT&PCR
270	Te Aitanga a Puta, Ngati Kurupakia Ngai Taurira	3/04/2017	CMT&PCR
271	Te Hika a Papauma	3/04/2017	CMT&PCR
272	The original owners of Mataikona	3/04/2017	CMT&PCR
273	The Pirere Whanau Trust and Te Hika o Papauma	3/04/2017	CMT&PCR

Annexure E

Total applications	Applicant Group	Date application received	Application type
274	Tukoko and Ngati Moe	3/04/2017	CMT&PCR
275	Waikawa Whanau	27/03/2017	CMT&PCR
276	Cletus Maanu Paul	3/04/2017	CMT&PCR
277	Hapu o Ngati Hangarau	3/04/2017	CMT&PCR
278	Ihakara Tangitu Reserve	30/03/2017	CMT&PCR
279	Motiti Rohe Moana Trust	13/02/2013	CMT
280	Ngā Hapū o Matakana	30/03/2017	CMT&PCR
281	Nga hapu o Ngai Te Rangi	3/04/2017	CMT&PCR
282	Ngā Pōtiki	27/02/2015	CMT&PCR
283	Ngā Uri o nga Tupuna	12/04/2012	CMT
284	Ngai Tamarawaho (Ngai Tamarawaho Tribal Authority Trust)	3/04/2017	CMT&PCR
285	Ngai Tamarawaho (Te Mana O Ngai Tamarawaho)	3/04/2017	CMT&PCR
286	Ngai Te Hapu	3/04/2017	CMT&PCR
287	Ngāi Te Hapū Incorporated Society	13/05/2013	CMT&PCR
288	Ngati He	3/04/2017	CMT&PCR
289	Ngati Makino and Ngati Pikiāo	3/04/2017	CMT&PCR
290	Ngati Pukenga	3/04/2017	CMT&PCR
291	Ngāti Ranginui	21/06/2012	CMT&PCR
292	Ngāti Rangitihī	20/02/2017	CMT&PCR
293	Ngāti Rangitihī Raupatu Trust inc	19/03/2013	CMT&PCR
294	Ngāti Whakahemo	30/03/2017	CMT&PCR
295	Pomare Paora Trust	31/03/2017	CMT&PCR
296	Te Patuwai and Ngati Maumoana Hapu	3/04/2017	CMT&PCR
297	Te Patuwai Tribal Council	26/03/2012	CMT&PCR
298	Te Uri a Tehapu	2/04/2017	CMT&PCR
299	Te Whanau a Mokomoko	3/04/2017	CMT&PCR
300	Waaka and Holloway Whanau	3/04/2017	CMT&PCR
301	Koromatua Hapu of Ngati Whakaue	3/04/2017	CMT&PCR
302	Te Arawa Takutai Moana Kaumatua (leadership roopu)	2/04/2017	CMT&PCR
303	Te Rūnanga o Ngāti Whakaue ki Makatū	6/08/2016	CMT&PCR
304	Tuwharetoa ki te Tai	3/04/2017	CMT&PCR
305	Waitaha Iwi	2/04/2017	CMT&PCR
306	Awanui Haparapara No1 Trust	1/04/2017	CMT
307	Herewini Hoera Tere Whanau and Opape 1A 19B Land Block Shareholders	3/04/2017	CMT&PCR
308	Kutarere Hapū	31/03/2017	CMT&PCR
309	Lesley McLean	3/04/2017	CMT&PCR
310	Ngai Tai (Mio)	3/04/2017	CMT&PCR
311	Ngai Tai Iwi (Jones)	3/04/2017	CMT&PCR
312	Ngai Taiwhakaea	9/02/2017	CMT&PCR
313	Ngai Tama Haua (Hillier)	2/04/2017	CMT&PCR
314	Ngai Tamahaua Hapu (Herewini)	3/04/2017	CMT&PCR
315	Ngāi Tamahaua Hapu (Wordsworth Hillier)	24/01/2017	CMT&PCR
316	Ngati Awa (Simpson)	3/04/2017	CMT&PCR
317	Ngati Awa (TRONA)	9/09/2013	CMT&PCR
318	Ngāti Awa Hapū (Enid Ratahi-Pryor)	2/11/2016	CMT&PCR
319	Ngāti Hokopū / Te Wharepaia	3/04/2017	CMT&PCR
320	Ngati Ira o Waioweka	31/03/2017	CMT&PCR
321	Ngati Muriwai Hapu	2/04/2017	CMT&PCR
322	Ngati Patumoana	3/04/2017	CMT&PCR
323	Ngati Ruatakana, Ngati Patu, Ngai Tama, Ngati Ira, Ngati Ngahere, Upokorehe (Whakatohea)	3/04/2017	CMT&PCR
324	Pahewa Whanau (Hamata)	3/04/2017	CMT&PCR
325	Pakowhai Hapu of Whakatohea	2/04/2017	CMT&PCR
326	Ririwhenua Hapu	31/03/2017	CMT&PCR
327	Rurima Maori Reservation	28/03/2017	CMT&PCR
328	Tangihia Hapu	3/04/2017	CMT&PCR

Annexure E

Total applications	Applicant Group	Date application received	Application type
329	Te Hapu o Titoko Ngai Tama	31/03/2017	CMT&PCR
330	Te Whānau ā Apanui (FSB)	1/04/2011	CMT
331	Te Whānau ā Apanui (Howell)	15/12/2016	CMT&PCR
332	Te Whānau ā Apanui (Karama Insley)	7/08/2016	CMT&PCR
333	Te Whānau ā Apanui (Michael Insley)	12/08/2016	CMT&PCR
334	Te Whānau ā Apanui (Te Runanga o te Whanau)	3/04/2017	CMT&PCR
335	Te Whanau a Apanui, Tutuwake, Delamere and Pahewa Whanau	3/04/2017	CMT&PCR
336	Te Whanau a Rangiharepo of Te Upokorehe and Ngati Tamahaua	3/04/2017	CMT&PCR
337	Te Whanau a Te Harawaka	3/04/2017	CMT&PCR
338	Te Whanau a Tuwhiawa-Ngati Paeakau	3/04/2017	CMT&PCR
339	Tūhoe	22/03/2017	CMT&PCR
340	Upokorehe Hapu (Te Whenua)	2/04/2017	CMT&PCR
341	Whakatohea Whanau, Hapu, Iwi	2/04/2017	CMT&PCR
342	Whanau a Apanui Hapu (Davis)	2/04/2017	CMT&PCR
343	Whitianga Trust	1/04/2017	CMT&PCR
344	Wikaire Whanau Trust	31/03/2017	CMT&PCR
345	Gemmell	23/03/2017	CMT&PCR
346	Henare Tahuaroa Watson Whanau (Whanganui Inlet)	31/03/2017	CMT&PCR
347	Hinehau Tahuaroa/ Riwaka Houra Whānau, Puketapu hapū	11/06/2012	CMT&PCR
348	Hinehau Tahuaroa-Riwaka Houra Whanau	31/03/2017	CMT&PCR
349	Love-Barcello Whānau	22/03/2017	CMT&PCR
350	Ngāti Apa ki te Ra To	31/03/2017	CMT&PCR
351	Ngāti Koata	14/06/2013	CMT&PCR
352	Ngati Rarua	3/04/2017	CMT&PCR
353	Ngati Tama ki Te Tau Ihu	3/04/2017	CMT&PCR
354	Rangitane o Wairau (Bradley)	2/04/2017	CMT&PCR
355	Rangitane o Wairau (Hynes)	3/04/2017	CMT&PCR
356	Tahuaroa Watson Whanau	28/03/2017	CMT&PCR
357	Tahuaroa-Watson Whanau & Puketapu hapū	27/04/2012	CMT&PCR
358	Te Atiawa o Te Waka a Maui Trust (East Coast/Cloudy Bay)	31/03/2017	CMT&PCR
359	Te Atiawa o Te Waka a Maui Trust (Mapua)	31/03/2017	CMT&PCR
360	Te Atiawa o Te Waka a Maui Trust (Mohua/Golden Bay)	31/03/2017	CMT&PCR
361	Te Atiawa o Te Waka a Maui Trust (Taranui Queen Charlotte Sound)	31/03/2017	CMT&PCR
362	Te Atiawa o Te Waka a Maui Trust (Whakatu/Te Hoiere)	31/03/2017	CMT&PCR
363	Te Huria Matenga Trust	3/04/2017	CMT&PCR
364	Te Runanga o Ngati Kuia Trust	1/04/2017	CMT&PCR
365	Te Runanga o Ngāti Toa Rangitira	23/03/2017	CMT&PCR
366	Trevor Tahuaroa-Watson, the Henare/ Henry Tahuaroa-Watson whānau & Neville Arapeta Tahuaroa	26/11/2012	CMT
367	Landowners of the Ruapuke Island Group	30/03/2017	CMT&PCR
368	Ngai Tahu Whanui	3/04/2017	CMT&PCR
369	Ngai Tu-ahu-riri-hapu	3/04/2017	CMT&PCR
370	Ngati Mutunga o Wharekauri Iwi	31/03/2017	CMT&PCR
371	Paul & Natalie Karaitiana	3/04/2017	CMT&PCR
372	Pohio Whanau	3/04/2017	CMT&PCR
373	Te Aitanga o Nga Uri o Wharekauri	28/03/2017	CMT&PCR
374	Te Imi Moriori	15/03/2017	CMT&PCR
375	Te Maiharoa Whanau	3/04/2017	CMT&PCR
376	Te Whanau o Topi	28/03/2017	CMT&PCR
377	Whanau of Tame Horomona Rehe	31/03/2017	CMT&PCR
378	Waitaha Nation (Waitaha Executive Grandmother Council)	3/04/2017	CMT&PCR
379	Cletus Maanu Paul (All Maori)	3/04/2017	CMT&PCR

Annexure E

Total applications	Applicant Group	Date application received	Application type
--------------------	-----------------	---------------------------	------------------